

SAFETY FOOT SWITCHES

Application

Safety foot switches are mounted on machines and plants as enabling switches in cases where operation using the hands is not possible and an emergency-stop function in case of a hazardous situation is required.

Design and mode of operation


All safety foot switches are mounted with a shield to protect against unintentional actuation.

When the foot pedal is actuated to as far as pressure point, the NO contact is closed. If, in case of danger, the pedal is actuated beyond the pressure point, then the positive break NC contact is opened and mechanically locked.

Reset operation is carried out by means of a push button. During the reset operation, the switch does not move through the switching-on point.

The safety foot switches conform to protection class IP 65. All safety foot switches bear the CE mark according to the Machinery Directive.



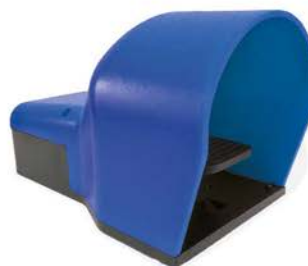
PRODUCT	DESCRIPTION	CONTACTS	CODE	MIN. PACK	WEIGHT
	<p>Foot switch with trigger mechanism requiring positive action to allow pedal operation.</p> <p>Colour: ■ PANTONE 102C</p>	Slow break		Quantity	gr.
		1NO	IP7007	1	1.400
		2NO	IP7008	1	1.400
		1NO+1NC	IP70071	1	1.400
		1NO	IP7009	1	1.400
		Two speeds 1NO+1NO	IP7015	1	1.400

This product is also available in different colors:

Colour:
■ RAL 7035



Colour:
■ RAL 5010



GENERAL CHARACTERISTICS

Comply with		IEC/EN60947-5-1							
Rated insulation voltage U_i	V	690 (pollution class 3)							
Rated impulse withstand voltage U_{imp}	kV	4							
Operating frequency	Hz	50/60							
Rated thermal current I_{th}	A	10							
Rated operating current I_e :									
AC-15 alternate current	V	24	60	120	240	400	440	500	690
	A	16	12	8	6	4,5	3,5	1	1
DC-13 continuous current	V	24	48	60	110	220			
	A	2	1,2	0,85	0,4	0,25			
Conditional short circuit withstand		1000A - 10A-500V class gG fuses							
Contact impedance	m Ω	≤ 25							
Contact type		Slow break double gap contacts							
Positive opening		NC contact with positive opening \odot							
Electric shock protection	IEC 536	Class II							
Protection rating	IEC 529	IP65							
Ambient temperature	$^{\circ}\text{C}$	Operating -25 +70							
	$^{\circ}\text{C}$	Storage -30 +70							
Cable entry		pre-broken hole 16,5 - M20 (with safety)							



DIMENSIONAL DRAWINGS

